

Next-Generation Shipbuilding: Unifying 3D Technologies for Enhanced Project Management



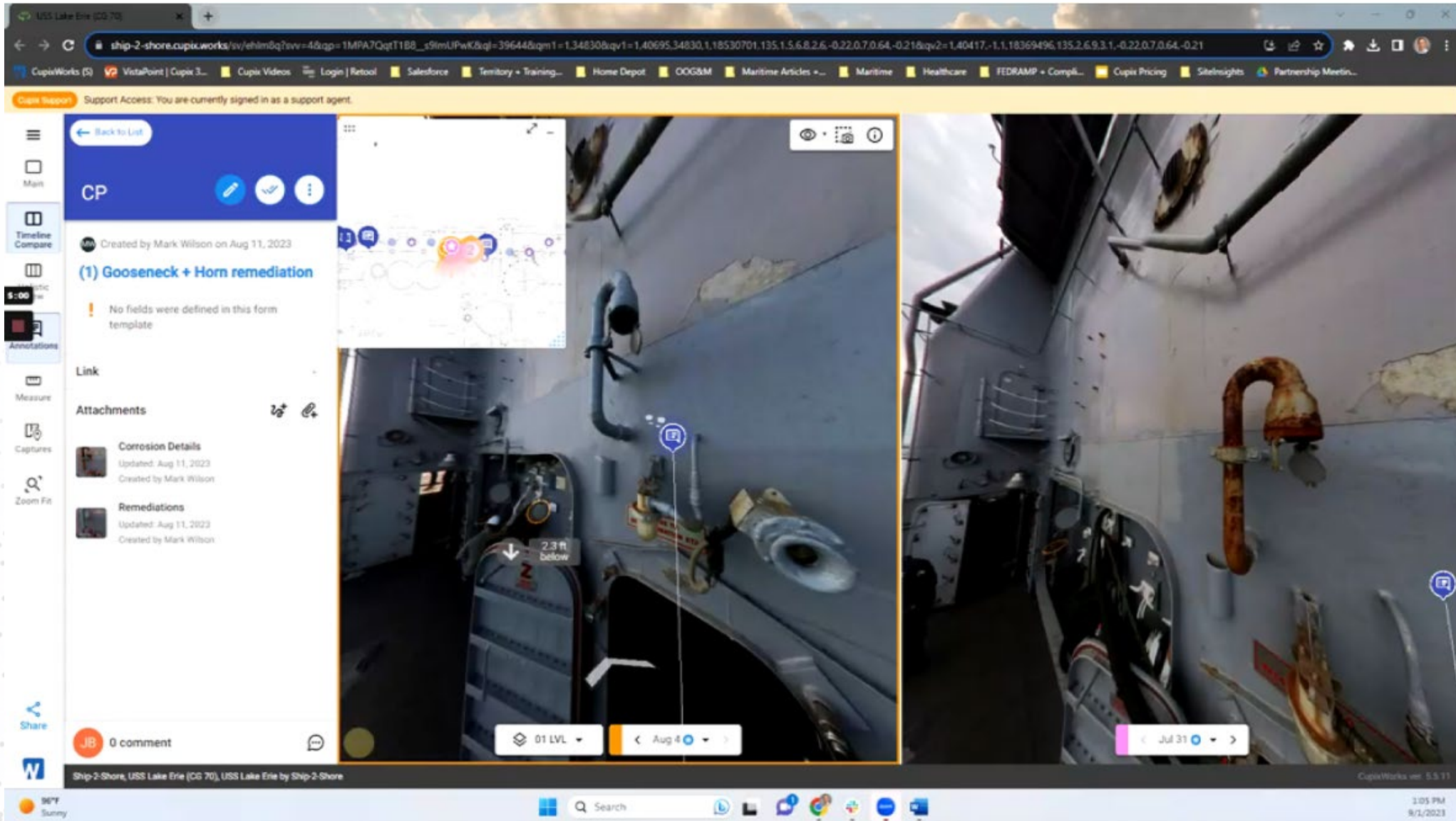
SSIWSC 2024

Design. Build. Maintain. Connect.

Joshua Bibb - Cupix



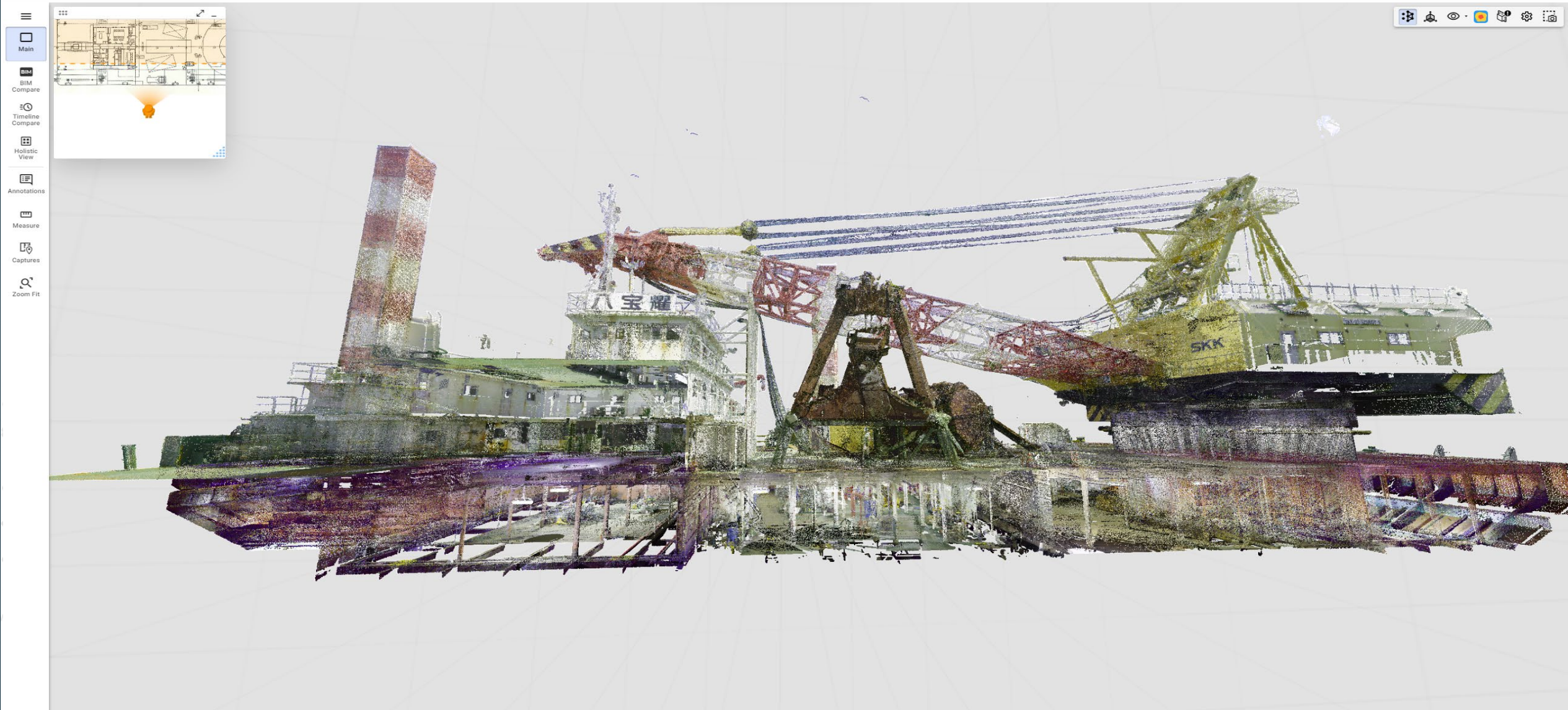
Visualization & Reporting



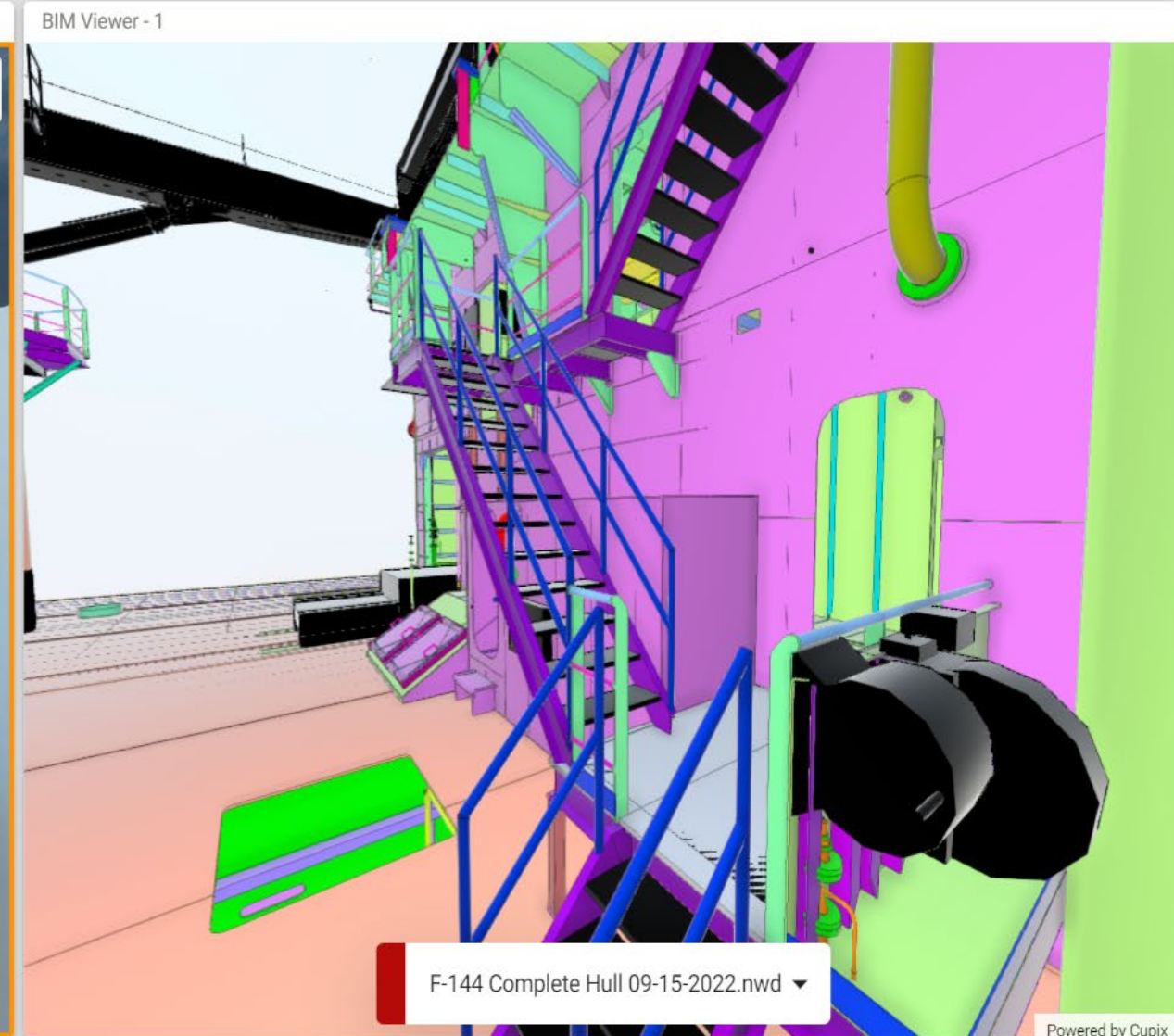
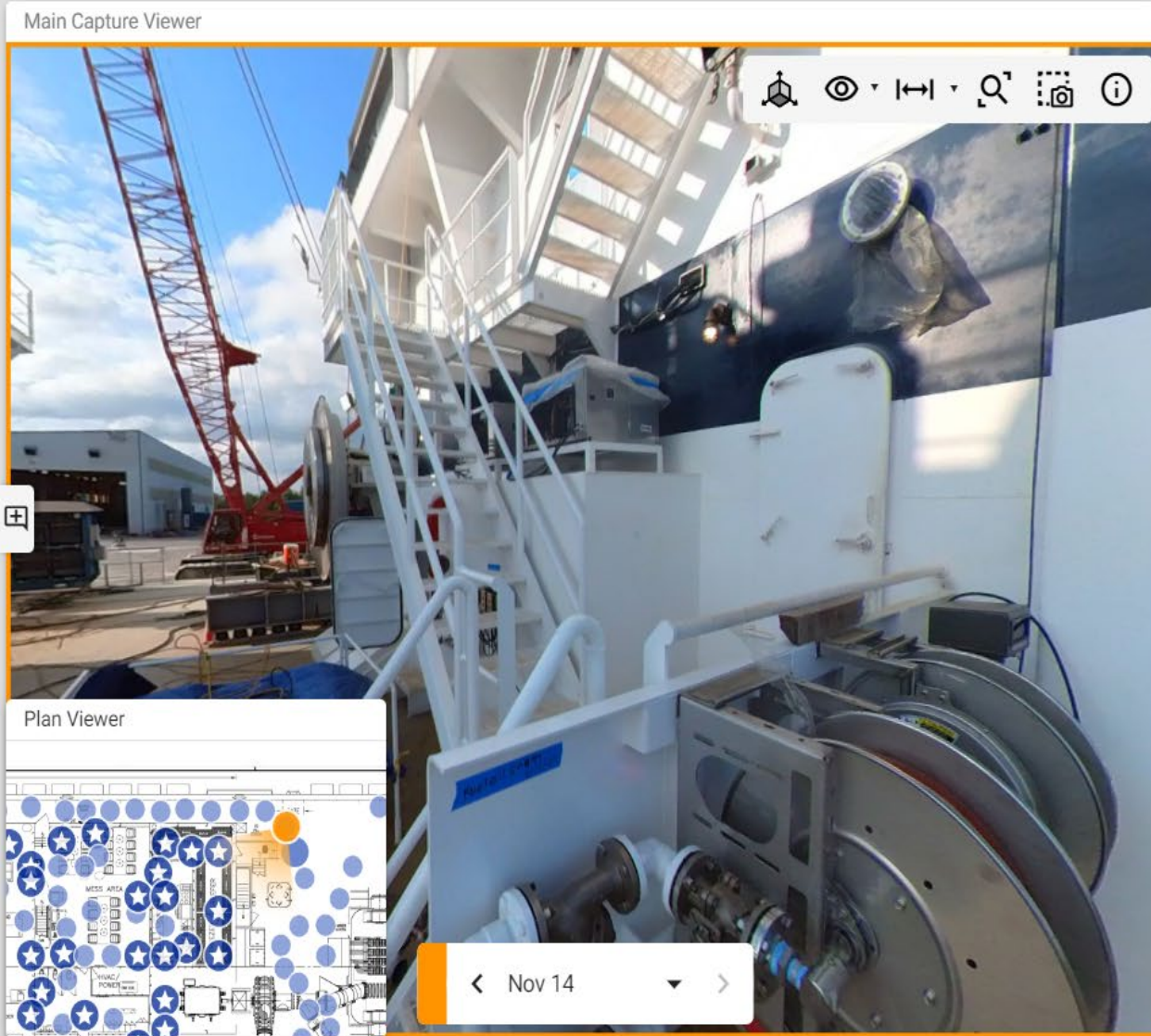
Point-cloud generation from a 360° camera



Consolidation of 3D data

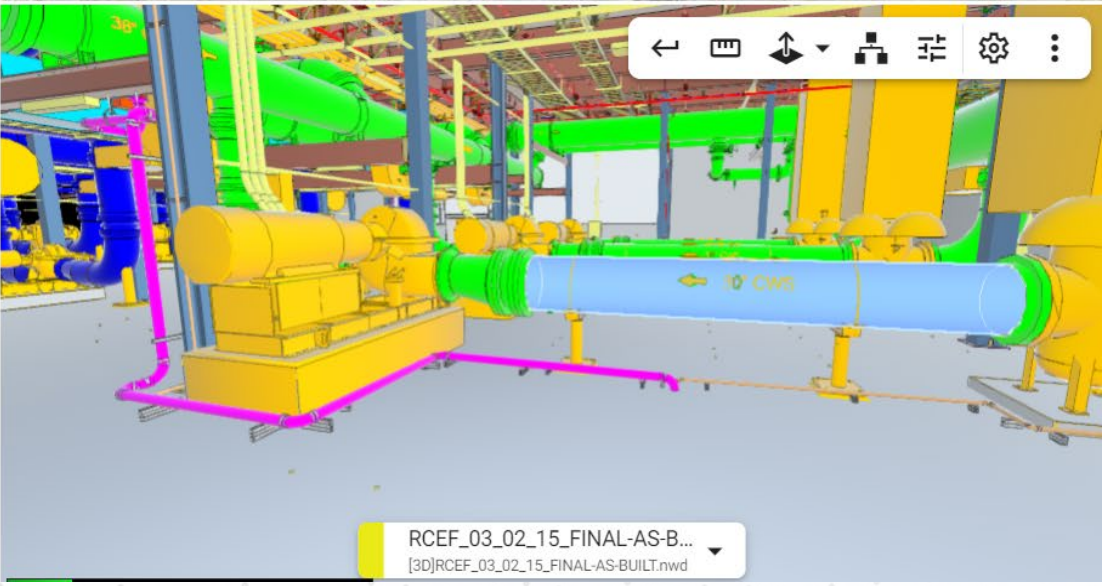
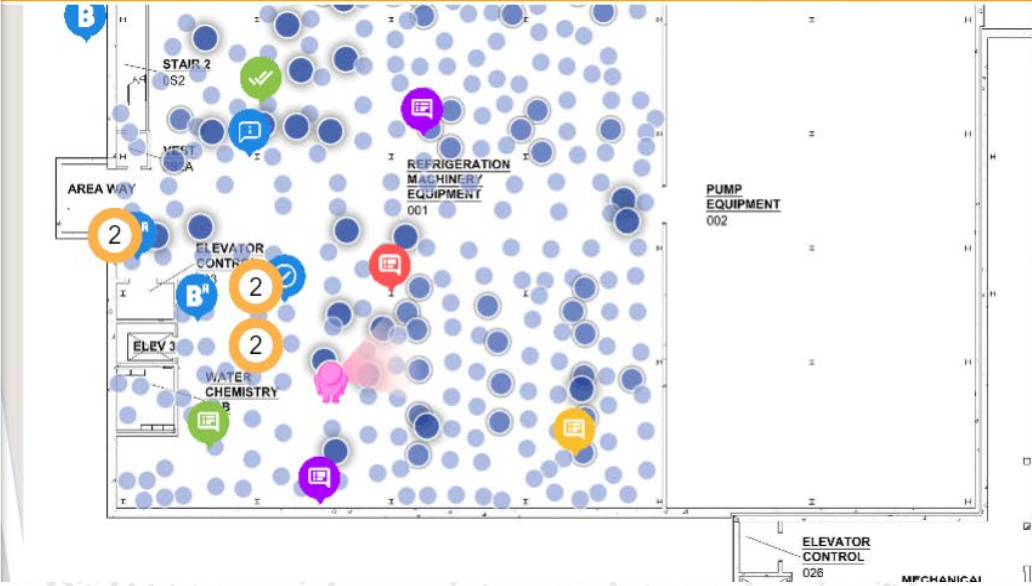
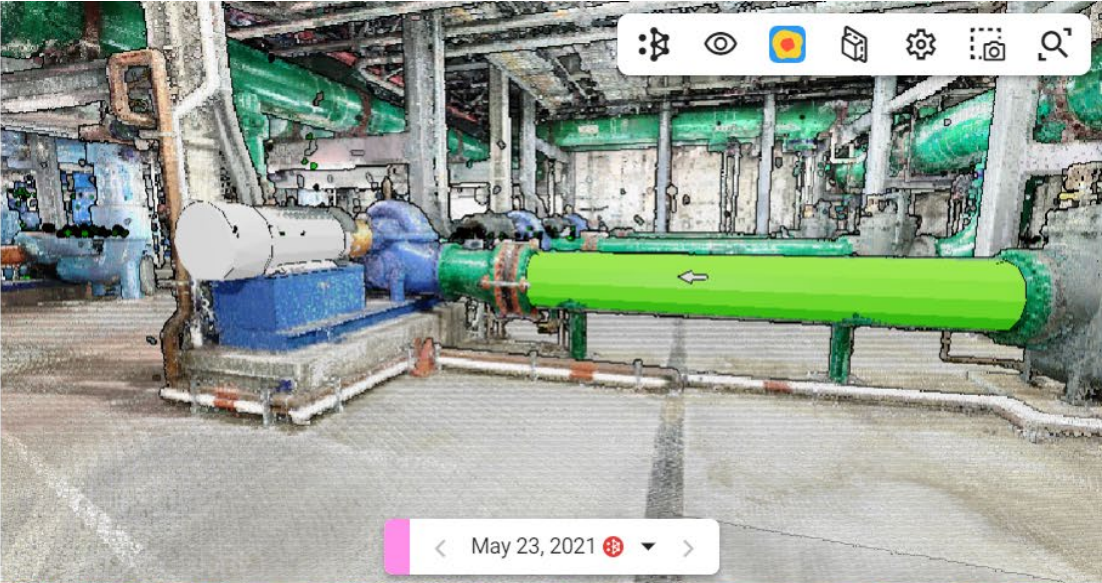
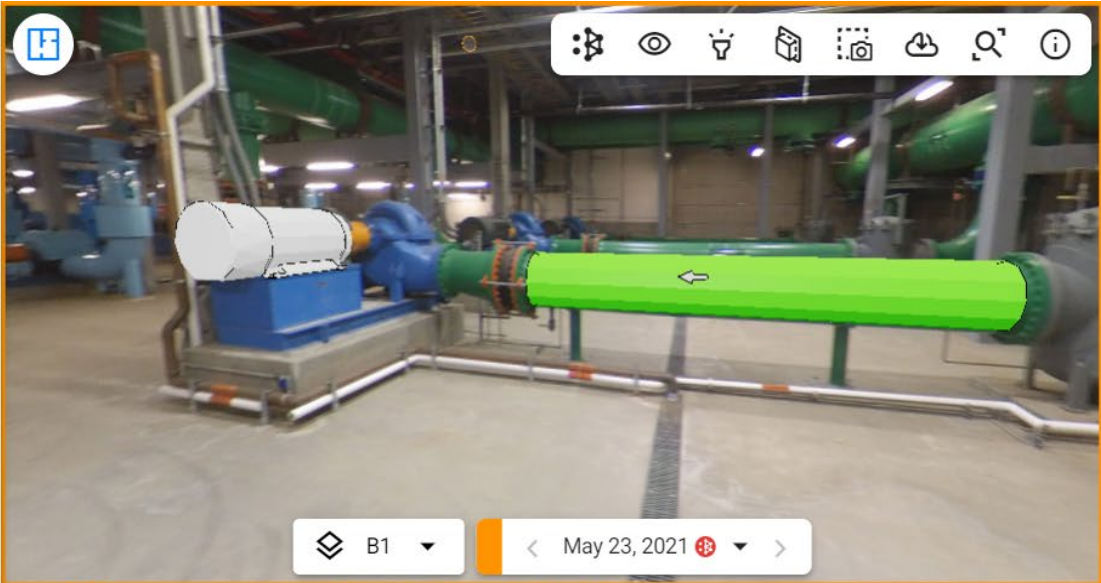


Unifying 3D Technologies

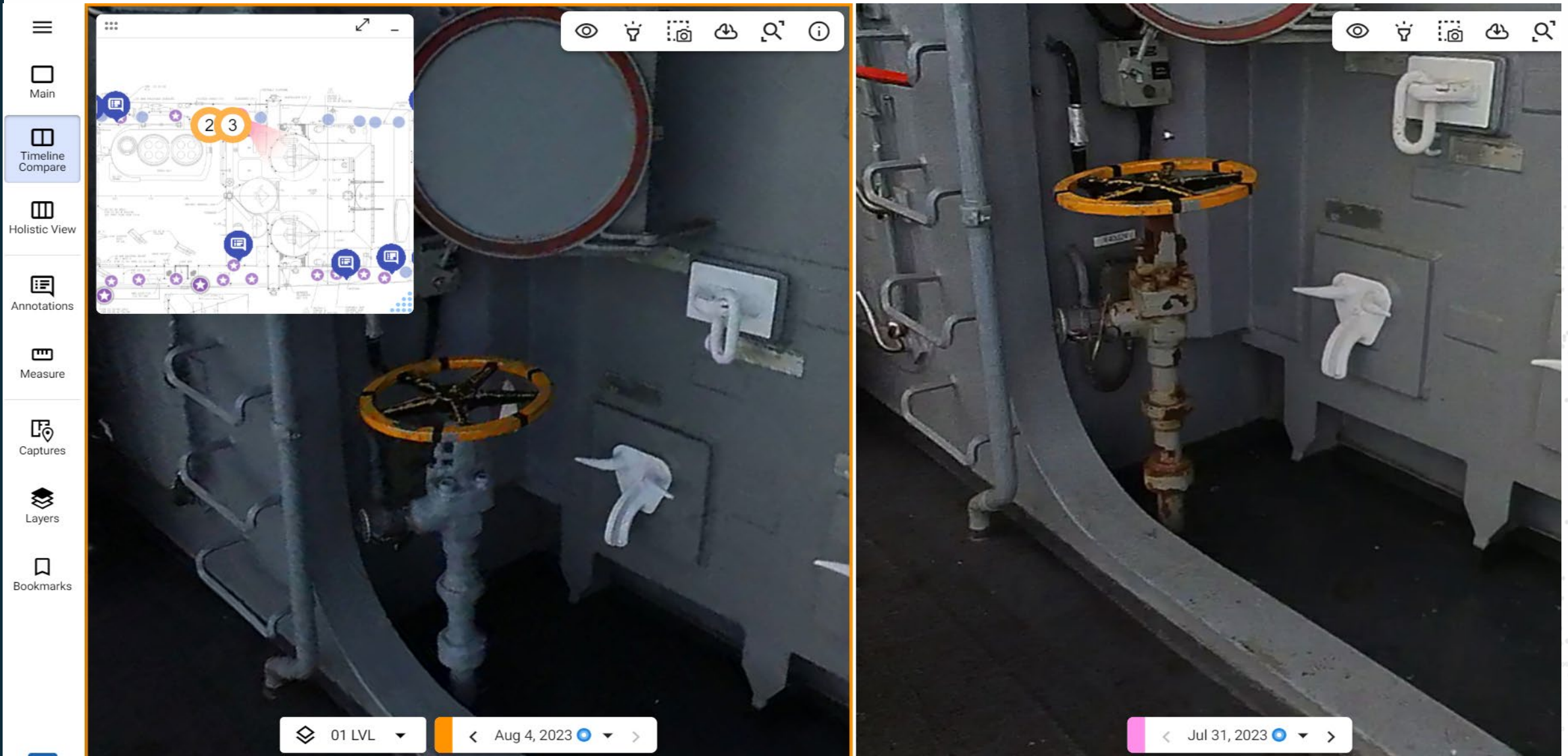


Fragmented data

- ☰
- Main
- BIM Compare
- Timeline Compare
- Isolistic View**
- Annotations
- Measure
- Captures
- Layers
- Bookmarks



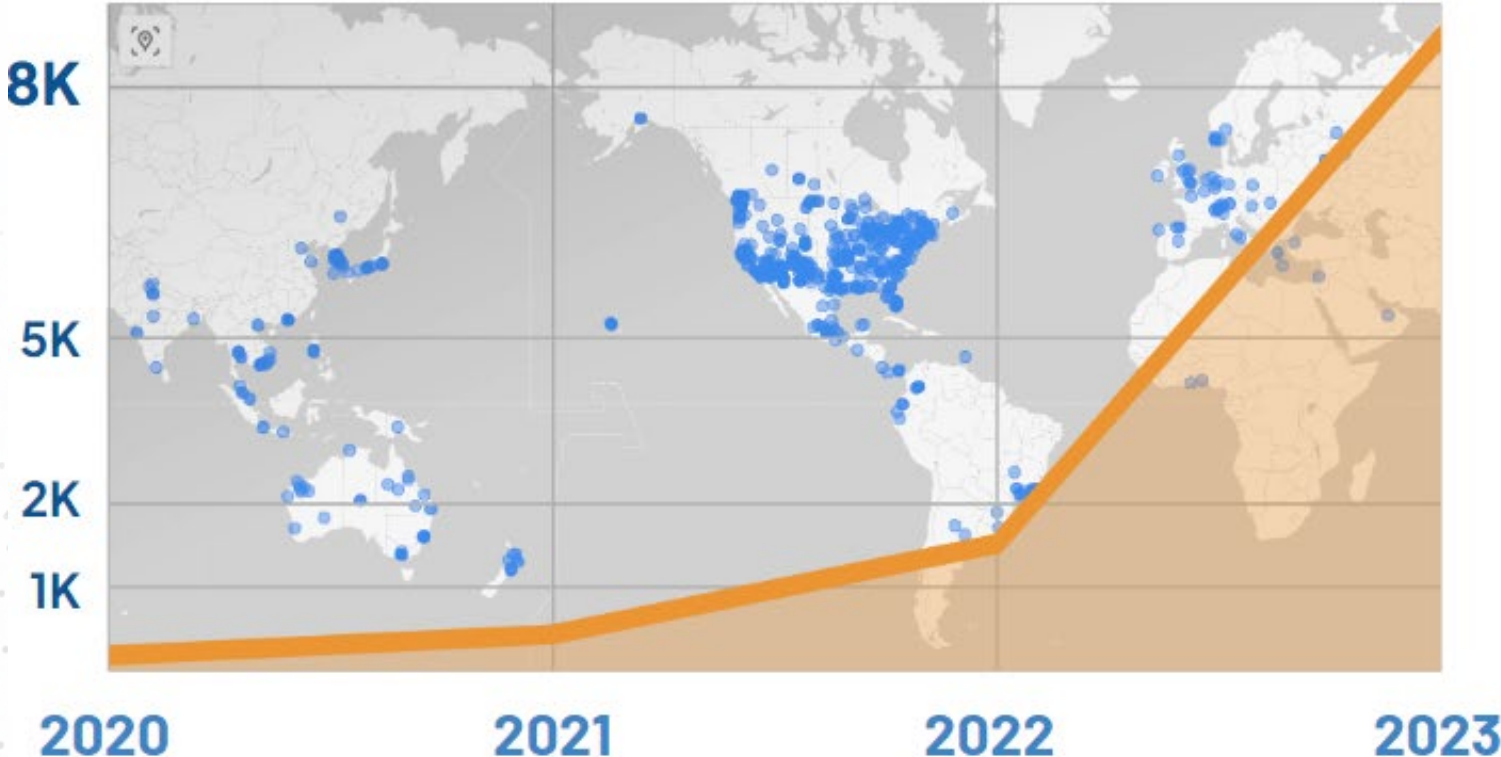
Timeline comparisons



		Innovation Highlights	Data and System Integration
 <p>CupixWorks 1.0</p>	2020	 <p>Proprietary 3D SLAM</p>	  
 <p>CupixWorks 2.0</p>	2021	 <p>Unified Platform</p>  <p>BIM Progress Tracking</p>	   
 <p>CupixWorks X</p>	2022	 <p>3rd-Gen Engine Teleporter</p>  <p>GPS, GCP and survey data support</p>	      
 <p>CupixWorks Y</p>	2023	 <p>3D Dollhouse</p>  <p>Deviation Check</p>  <p>SiteInsights</p>	  

Commercial Off-the-shelf Solution

8,000+ Projects and Counting: CupixWorks Transforms the Global Landscape Across 30+ Countries



Global Project Count
leveraging CupixWorks

8,000+

YoY Growth in 2023

433%



SSIWSC 2024

Design. Build. Maintain. Connect.

Workshops on Thursday
at 1pm and 3:30pm.





SSIWSC 2024

Design. Build. Maintain. Connect.

Questions?

Thank you for time and attention.

