



SSIWSC 2024

Design. Build. Maintain. Connect.

Dashboards & Reporting for Shipbuilding

Ken LaPerle – PLM Specialist, Enterprise Solutions Team



Dashboards & Reporting for Shipbuilding - Agenda

01 Primary Reporting capabilities

05 Demo

02 ShipConstructor – Publisher /
PublisherLT, MIM

06 Close and Questions

03 ShipbuildingPLM Status
Dashboards

04 ShipbuildingPLM SSR
interactive reports



Primary Reporting Capabilities

PublisherLT

Power BI

ShipbuildingPLM Reporting

WIP Detail Design Data, Engineering Productivity

ShipConstructor
functionality to
generate outputs from
the database through
Enterprise Platform

Microsoft Reporting
solution that integrates
with ShipConstructor
database

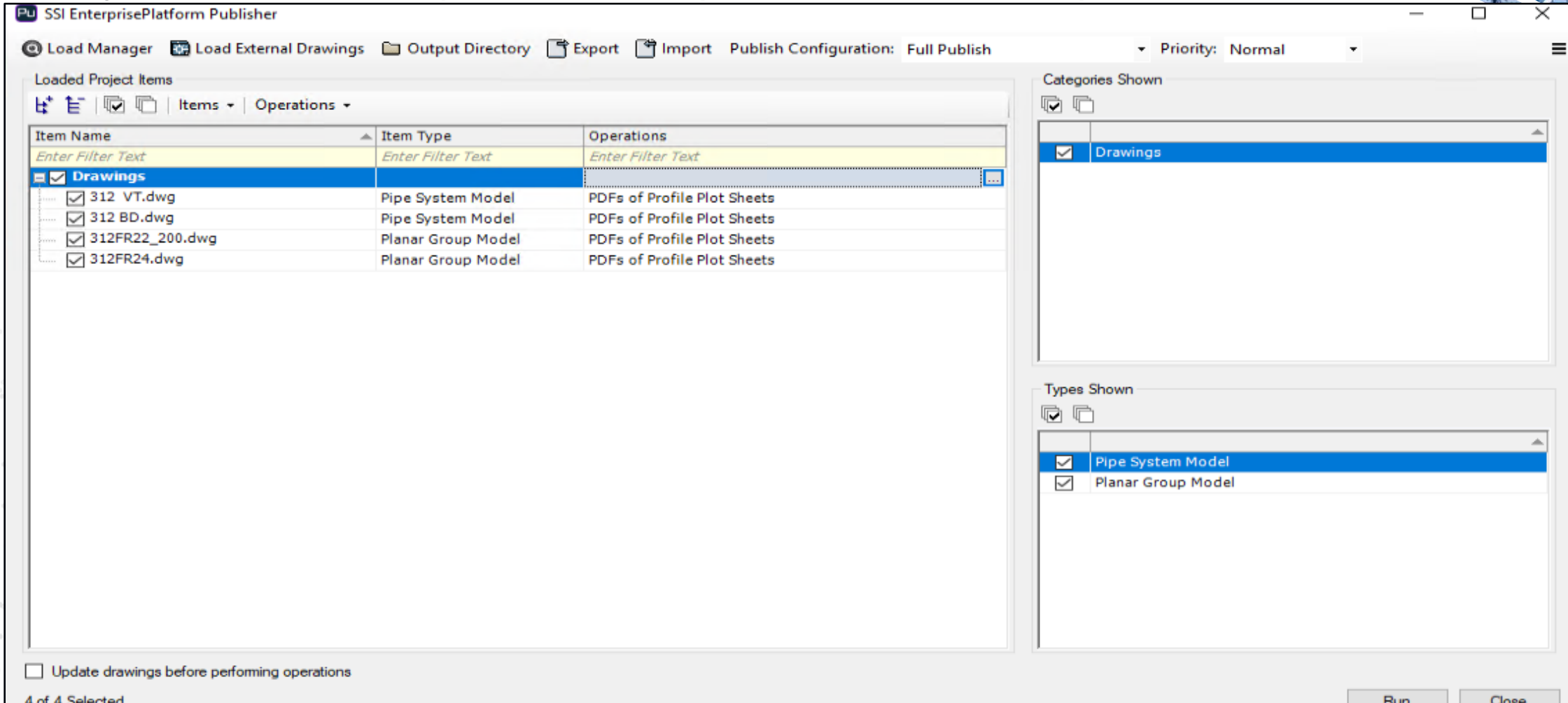
Complete Shipbuilding Lifecycle

Reporting of Product
Data throughout the
Shipbuilding Lifecycle
(Initial, Functional, Detail)

Dashboards & Reporting for Shipbuilding

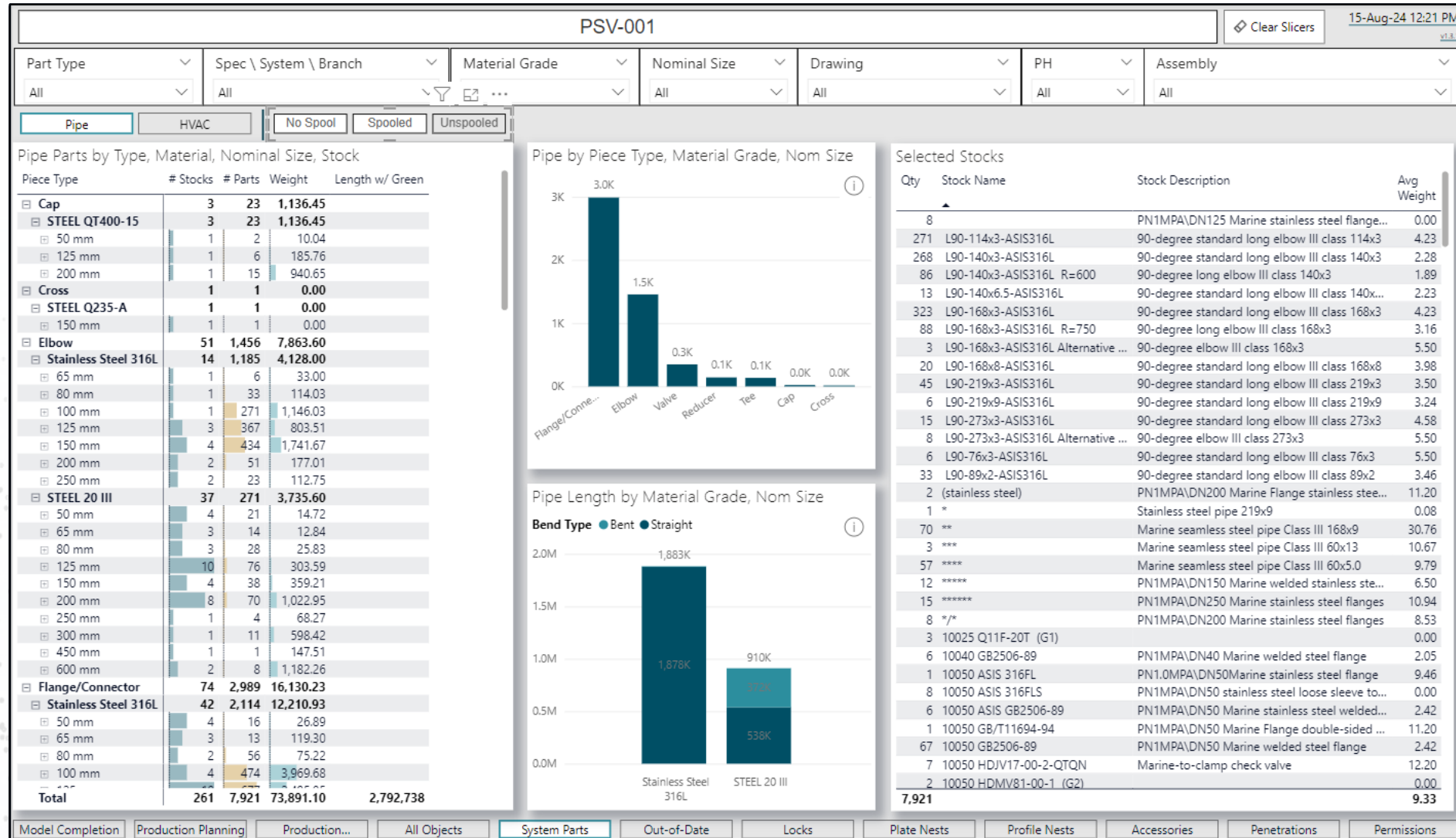
2. ShipConstructor – Publisher / PublisherLT

- SSI Enterprise Platform Publisher and PublisherLT may be used to generate custom ShipConstructor reports, to extract and export WIP data.



Dashboards & Reporting for Shipbuilding

2. ShipConstructor – MIM Reports



Marine Information Modeling (MIM) reports present Work In Progress (WIP) views of ShipConstructor data.

Dashboards & Reporting for Shipbuilding

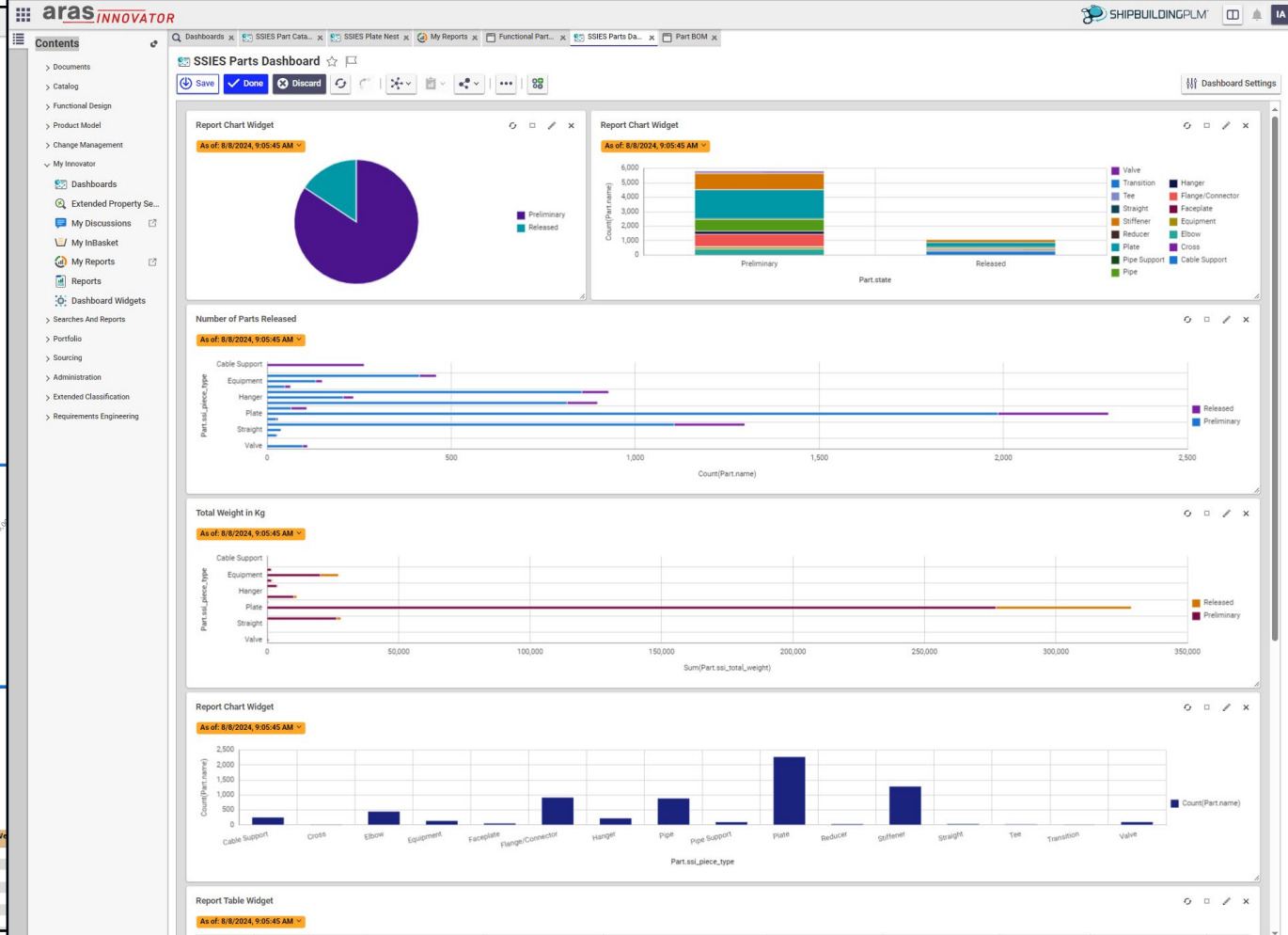
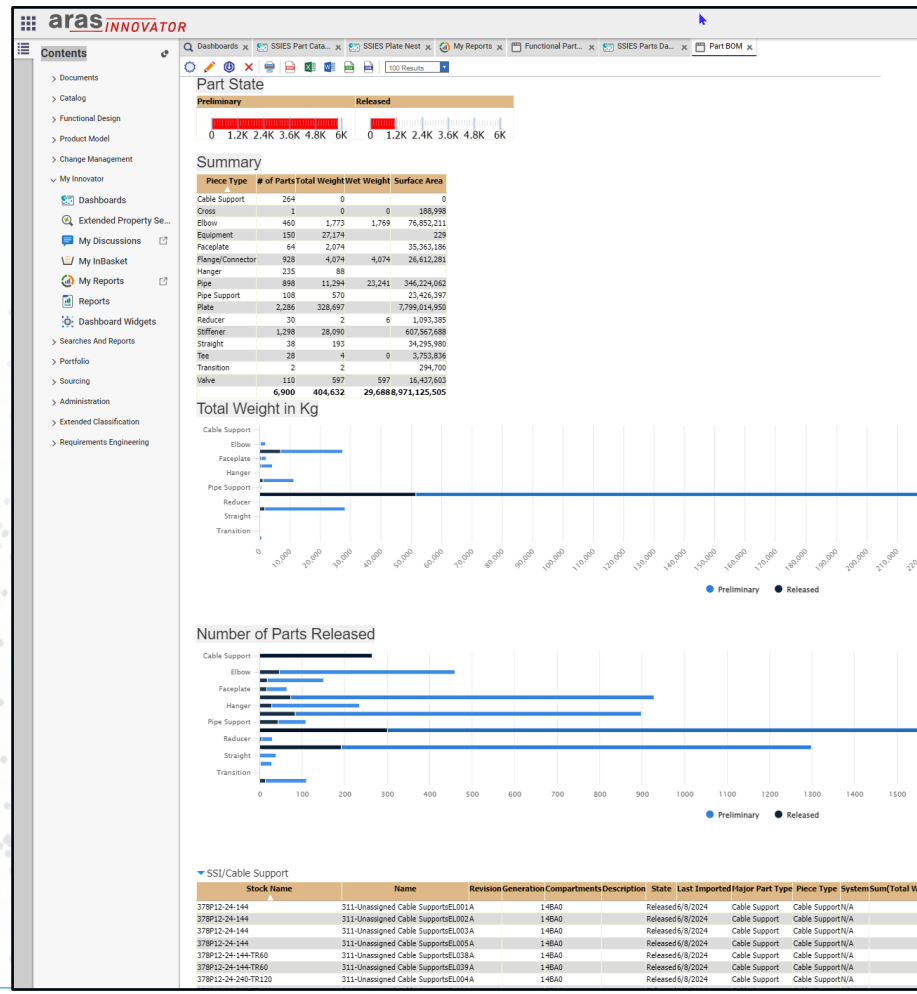
3. ShipConstructor MIM Reports vs ShipbuildingPLM Reports

- **ShipConstructor Reports and ShipbuildingPLM Reports are complimentary.**
- PowerBI Marine Information Model (MIM) reports provide oversight of Work In Progress (WIP) ShipConstructor projects.
- ShipbuildingPLM reports track the maturity of all Engineering product data as it evolves through shipbuilding lifecycles, as well as providing actionable insights into possible process bottlenecks.

Dashboards & Reporting for Shipbuilding

4. ShipbuildingPLM Reports

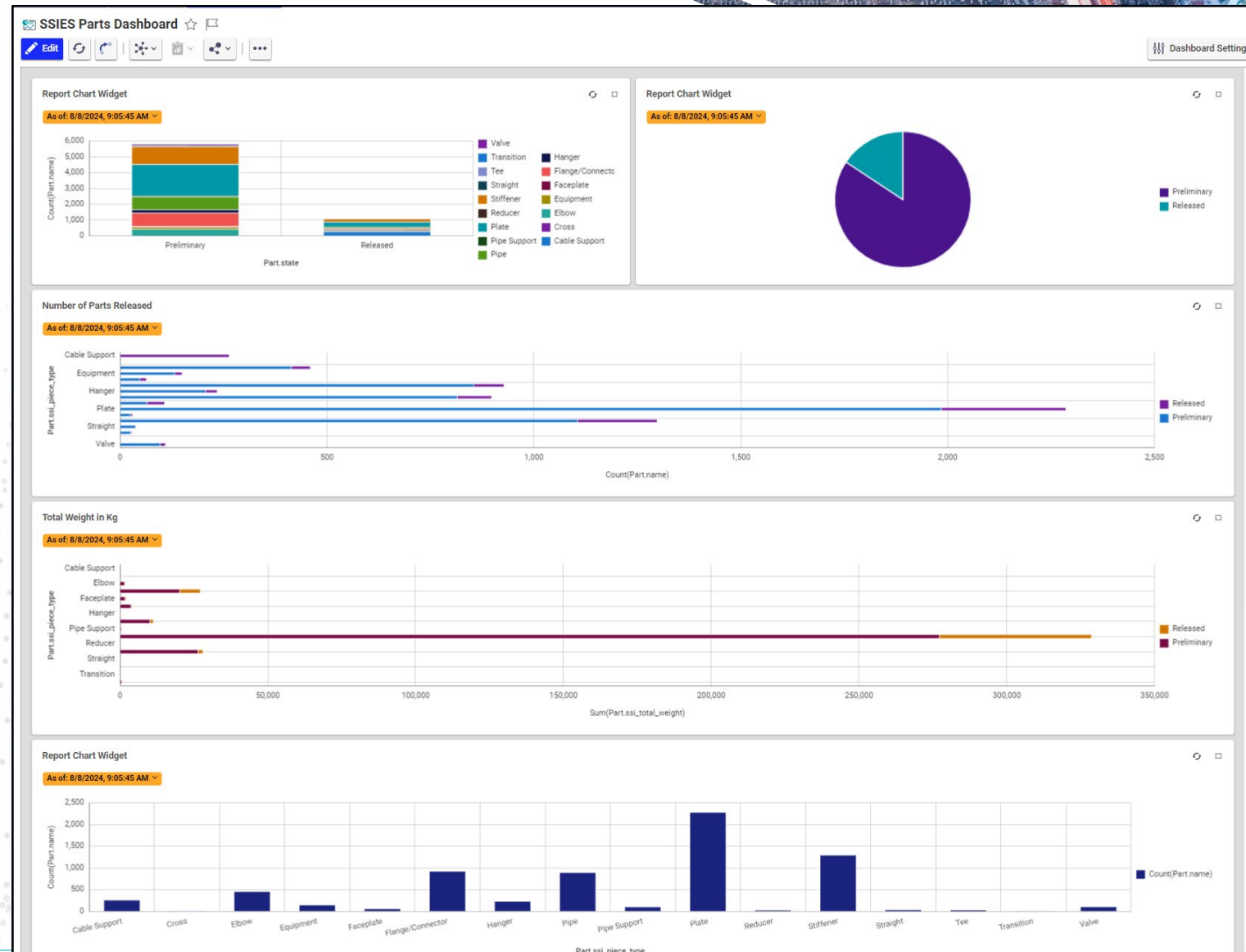
- **ShipbuildingPLM Reports** can be generated using **Self Service Reports**
- or the new **Aras Innovator Dashboard and Reports**



Dashboards & Reporting for Shipbuilding

4. ShipbuildingPLM Dashboard Reports

- ShipbuildingPLM 2025 is built on the Aras Innovator R30 platform.
- New Dashboarding and Reports feature allows flexible client definable reports that can then be reflected through analytical graphics.
- Highly suited to Progress, Status and Oversight functions.



Dashboards & Reporting for Shipbuilding

4. ShipbuildingPLM Self Service Reports – SSR's



The Aras Innovator Self Service Reports feature is highly suited to Run time **interactive** and **interrogatory** needs due to the ability to host Run Time filters to apply limiting conditions

Part State Summary

Piece Type	# of Parts	Total Weight	Wet Weight	Surface Area
Cable Support	264	0	0	0
Gross	1	0	0	188,998
Elbow	460	1,773	1,769	76,852,211
Equipment	150	27,174		229
Faceplate	64	2,074		35,363,186
Flange/Connector	928	4,074	4,074	26,612,281
Hanger	235	88		
Pipe	898	11,294	23,241	346,224,062
Pipe Support	108	570		23,426,397
Plate	2,285	328,697		7,799,014,950
Reducer	30	2	6	1,093,385
Stiffener	1,298	28,090		607,567,688
Straight	38	193		34,295,980
Tee	28	4	0	3,753,836
Transition	2	2		294,700
Valve	110	597	597	16,437,603
Total	6,900	404,632	29,688,971,125,505	

Part BOM Table

Stock Name	Name	Revision	Generation	Compartments	Description	State	Last Imported	Major Part Type	Piece Type	System Sum (Total Weight)	Weight with Green	Weight Surface Area
378P12-24-144	311-Unassigned Cable SupportsEL001A	1	4BA0			Released	6/8/2024	Cable Support	Cable Support/N/A	0	0	0
378P12-24-144	311-Unassigned Cable SupportsEL002A	1	4BA0			Released	6/8/2024	Cable Support	Cable Support/N/A	0	0	0
378P12-24-144	311-Unassigned Cable SupportsEL003A	1	4BA0			Released	6/8/2024	Cable Support	Cable Support/N/A	0	0	0
378P12-24-144	311-Unassigned Cable SupportsEL005A	1	4BA0			Released	6/8/2024	Cable Support	Cable Support/N/A	0	0	0
378P12-24-144-TR60	311-Unassigned Cable SupportsEL003A	1	4BA0			Released	6/8/2024	Cable Support	Cable Support/N/A	0	0	0
378P12-24-144-TR60	311-Unassigned Cable SupportsEL003A	1	4BA0			Released	6/8/2024	Cable Support	Cable Support/N/A	0	0	0
378P12-24-240-TR120	311-Unassigned Cable SupportsEL004A	1	4BA0			Released	6/8/2024	Cable Support	Cable Support/N/A	0	0	0

Example Slides



What is the weight of each Block?



Have the spools in this Block all been approved?



What is the current part breakdown in this Block?



What Functional Parts are in each SWBS and their current state?



What is the state of my production drawings per Hull?



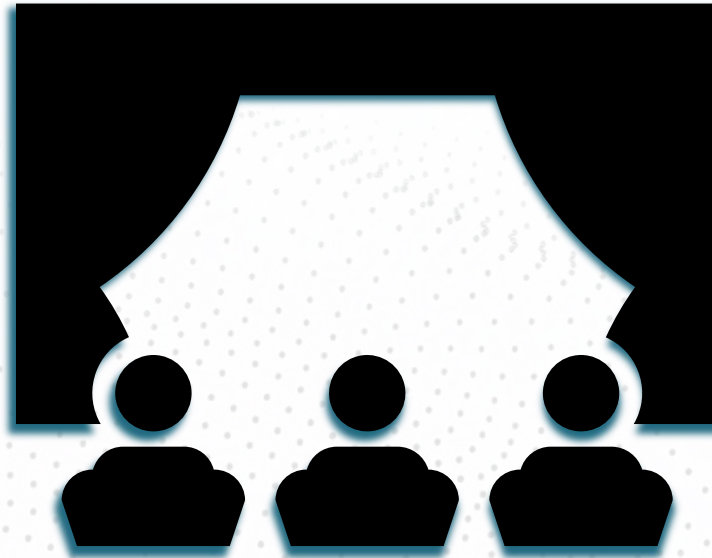
What items are undergoing change?



Gain oversight of your shipbuilding data

Dashboards & Reporting for Shipbuilding

5. ShipbuildingPLM Reports – Demo



Dashboards & Reporting for Shipbuilding

Reporting from the Extended Digital Thread

- Remember that Data does not become actionable Information until it is understood in the Context of Maturity, Time, Change, Relationships to other related Data, etc.
- This is what we at SSI call the Digital Thread.
- This is at the very core of ShipbuildingPLM.
- Reports and Dashboards may be created to disclose those relationships, highlight relevant conditions and allow early recognition of issues that may affect productivity.

Thank you for your time – Questions?

