



SSIWSC 2024

Design. Build. Maintain. Connect.

Making the 3D Model Resourceful & Intelligent

“add more value to your customer and the process”

Gert Jan Brons – Buoyancy Consultants / Bronsolution





Topics

- Introduction
- Team up with production
- Job process
- More intelligent 3D model
- Virtual construction



Buoyancy Consultants (1)

The Maritime Engineering Service company

- Founded in 2013
- Based in Goa India
- Management with a lot of European experience
- 95 employees
- Professional, well-organized, ambitious and innovative maritime engineering company
- ISO 9001 and ISO 27001 certified (Information Security Management System)
- Partners in US (joint venture), Norway, Singapore, Netherlands (since 2017)
- Core values: Delivering continuous quality, according to plan, at favorable rates
- 97% repeat orders from existing customers
- Buoyancy Consultants won many awards in India
- Wave touched 32+ countries via 330+ projects

European marketing vision :
We offer quality engineering capacity to engineering companies.



Buoyancy Consultants (2)

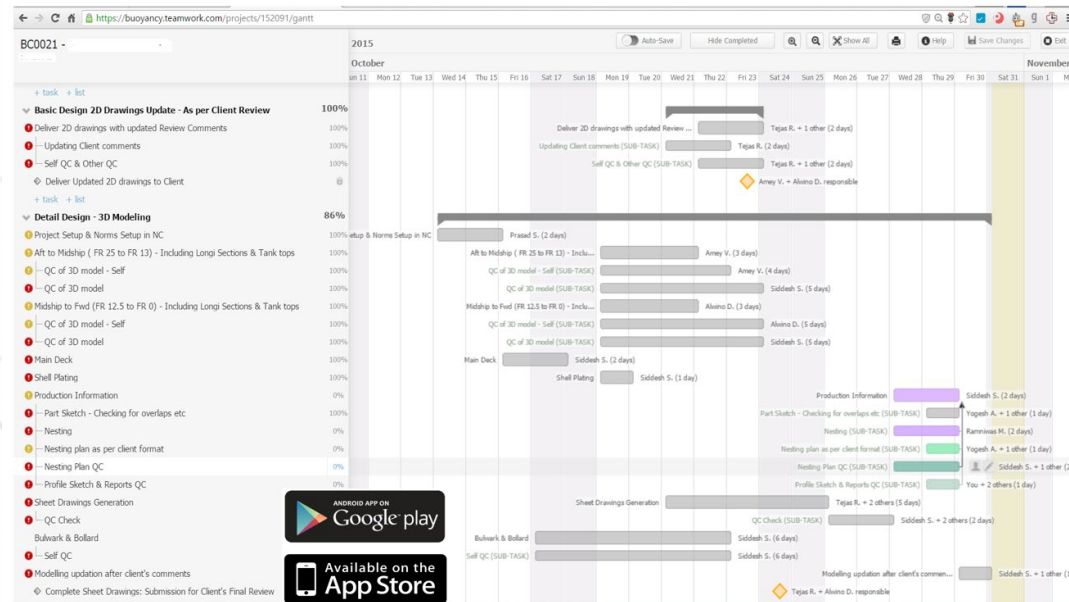
Our services

- Concept design
 - Basic design
 - Initial design
 - Analysis / calculations
 - Class drawings
 - Detail design
 - 3D laser scanning
 - On site services
 - Project management
- Retrofit
 - Conversions
 - New built

Buoyancy Consultants (3)

Key Features

Our Unique Approach



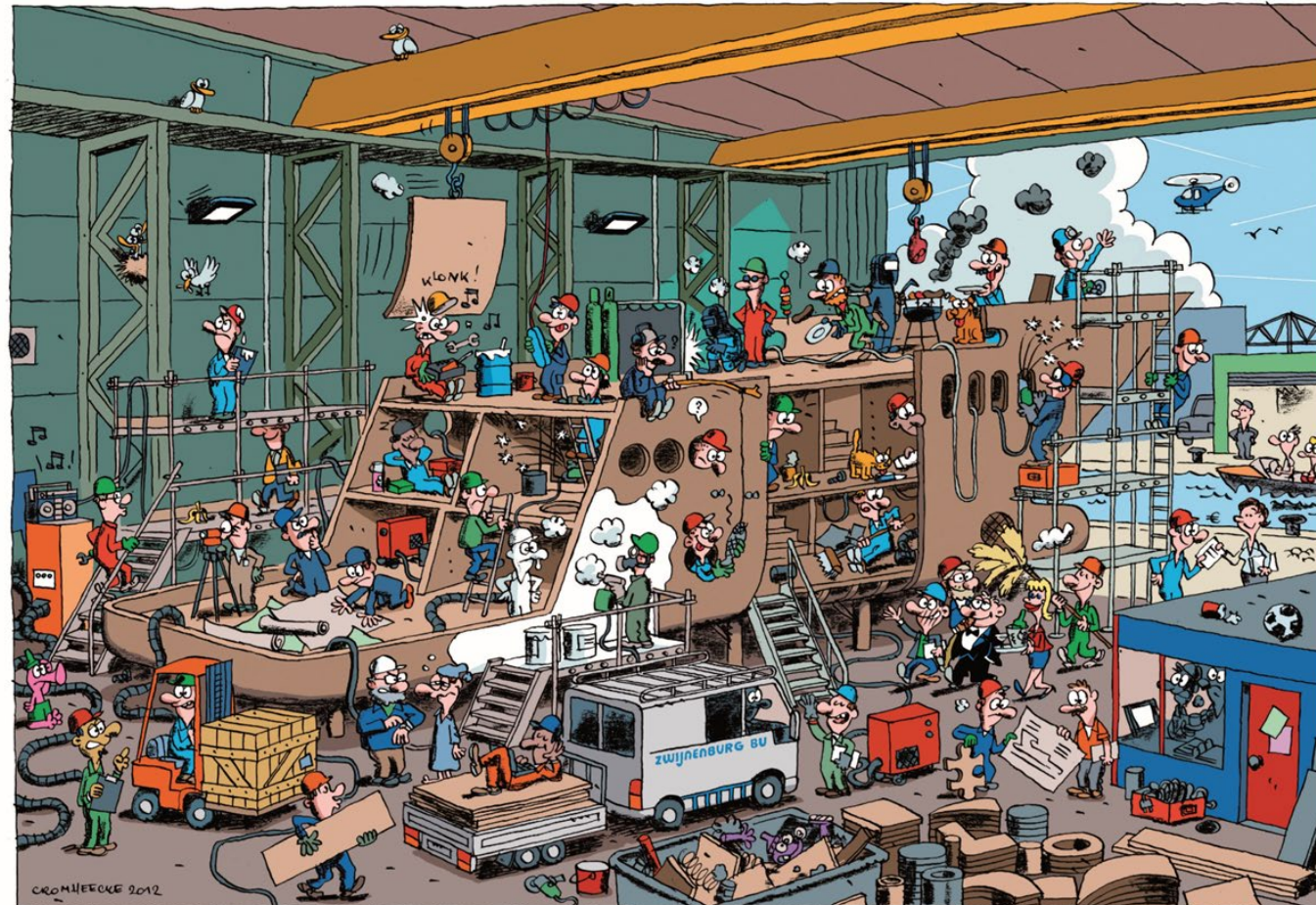
Buoyancy Consultants (4)

Main office in Goa



Team up with production

Together you want to avoid this !



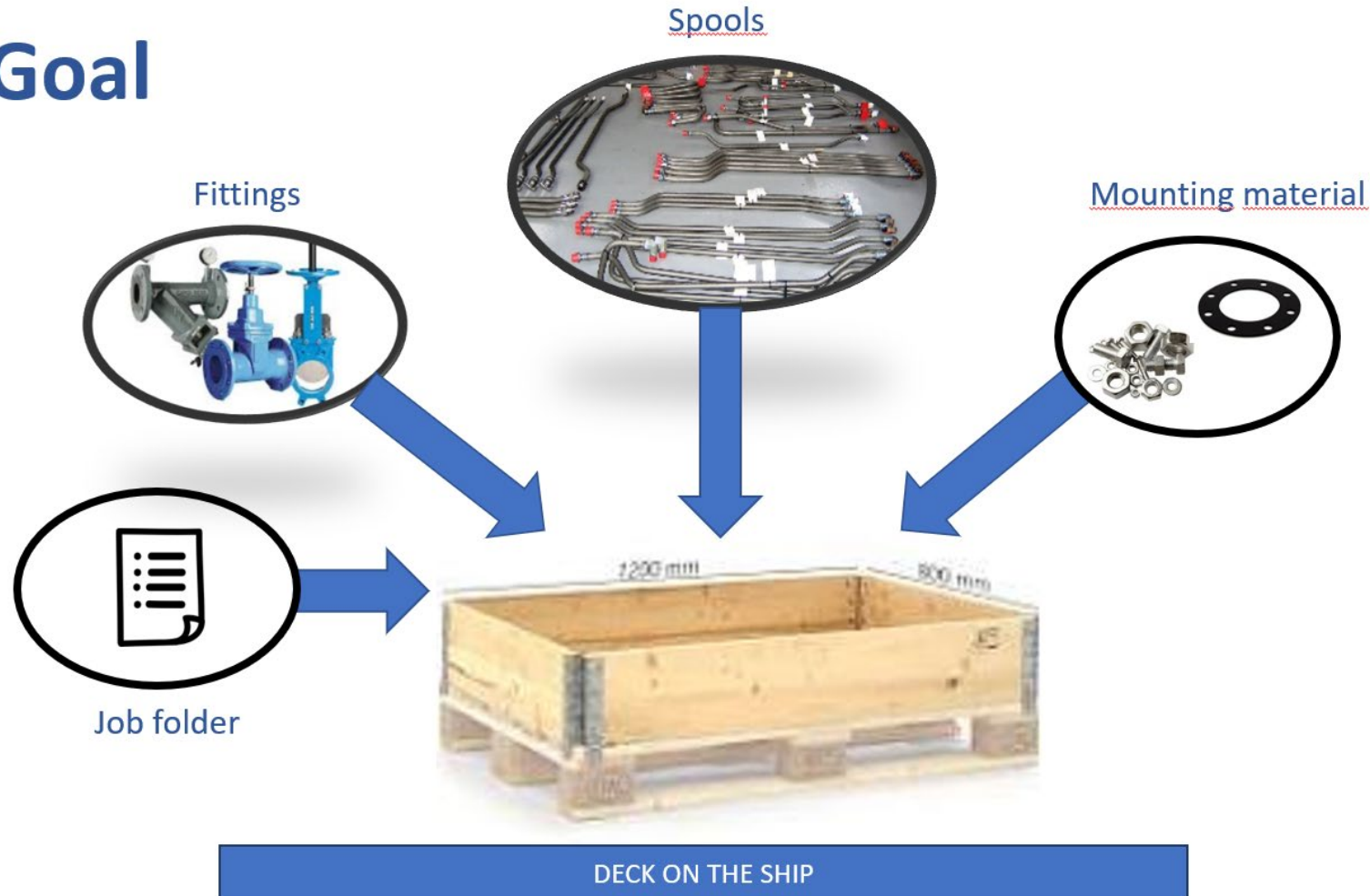
Y 707 Luc Cromheecke

zwijenburg

Job process (1)

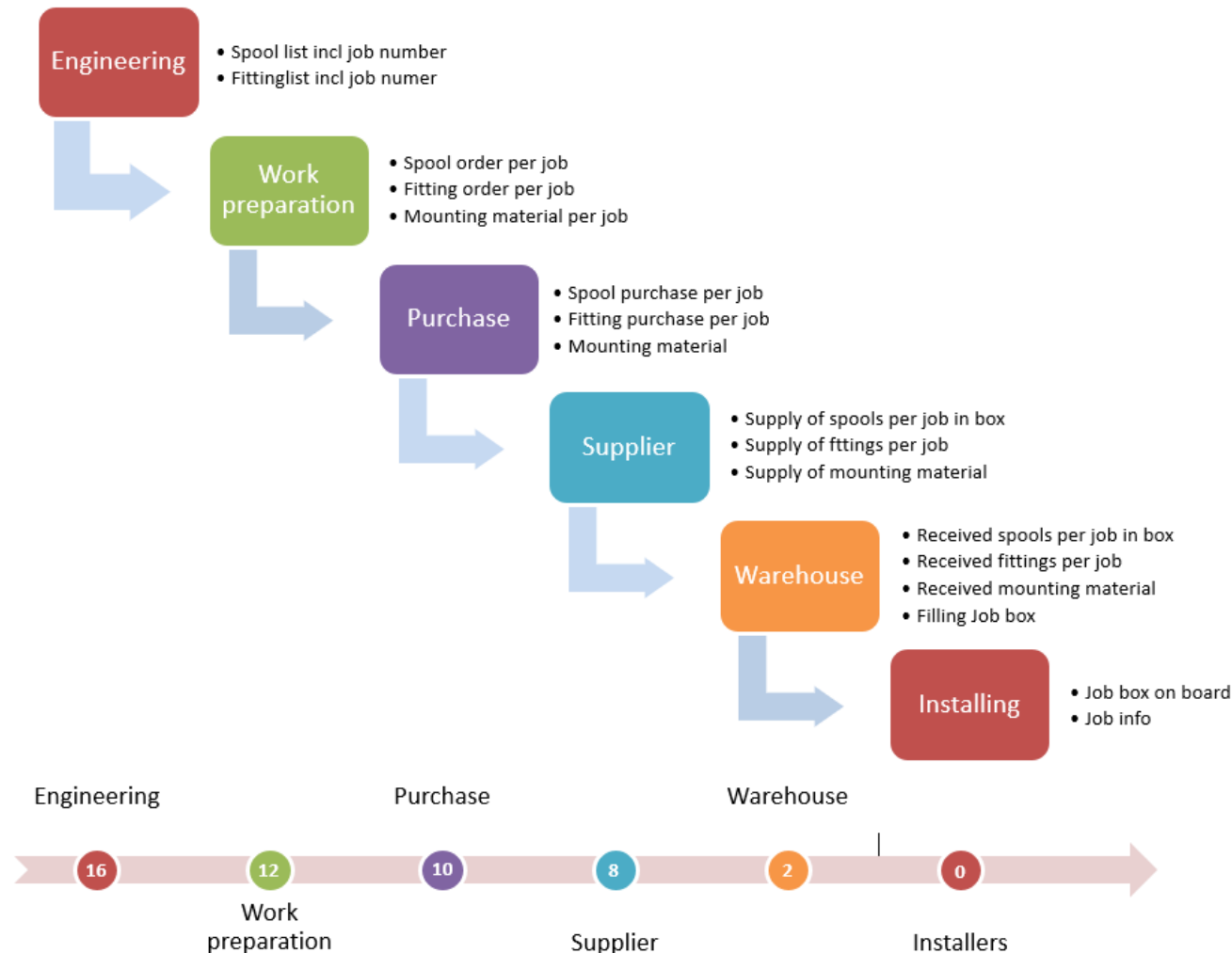
Job box

Goal



Job process (2)

Topics

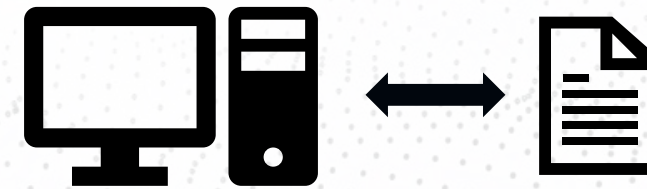


Job process (3)

Job Folder

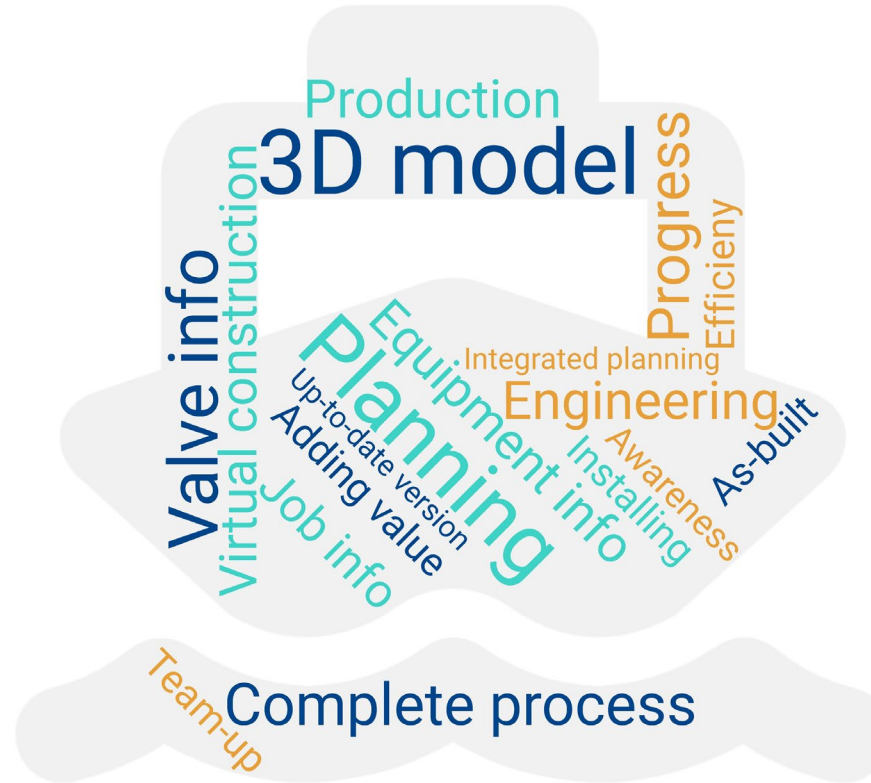
Job folder ;

- Cover page
 - Job number
 - Number of spools and fittings
 - Job box number
 - Barcode for job
 - Names fitters and welders
 - Start date
 - Complete date
 - Etc.....
- Snapshot of job in 3D model
- Axo view of all spools from 3D model
- Iso's of spools

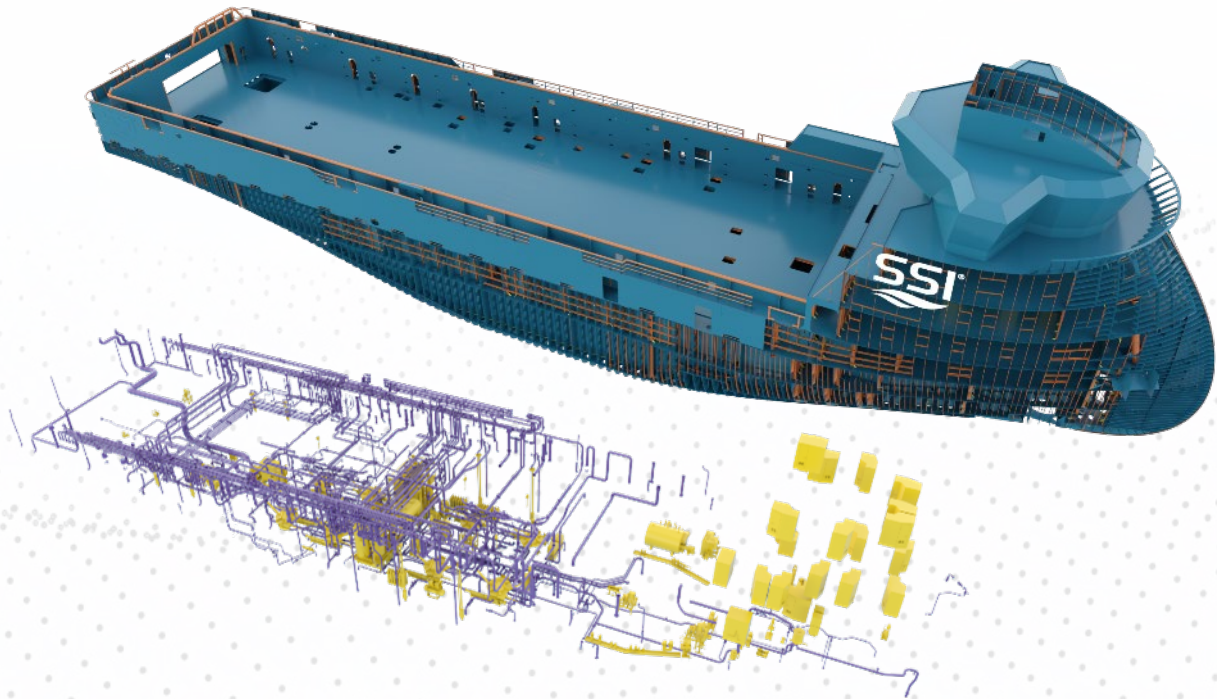


More intelligent 3D model

Starts at engineering



Virtual construction



Thank you for your attention

Shipbuilding is like realizing a living creature.
The hull and construction are the bony foundation.
Organs – the engine, generators, pumps – are placed into the body.
Circulation is possible by installing piping in the hull.
By installing cabling, the nervous system is supplied.
The control room gives the ship a brain.
The ship is dressed and begins to live during the commissioning.
And when a satisfied owner sails it away, the ship has a soul.

Gert Jan Brons

