



SSIWSC 2024

Design. Build. Maintain. Connect.

CAD *and* PLM are Not 4-Letter Words

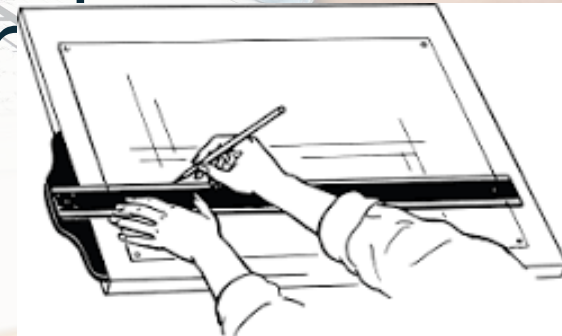
David Males, Director of Business Development, SSI



CAD and PLM are Not 4-Letter Words



Shipyards can't imagine going back to drafting board





PLM Adoption in Shipbuilding is not
as widespread as CAD



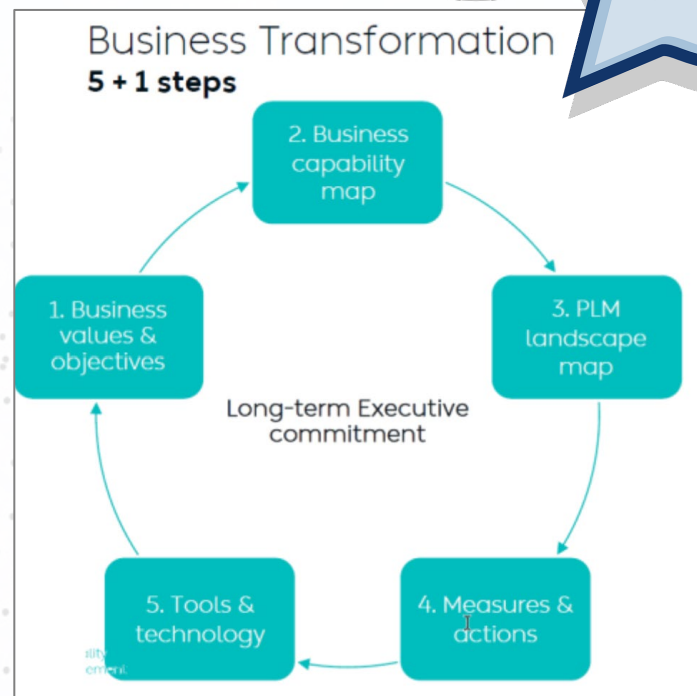
Avoid using the “P” word
in your management
messaging



Myth - PLM Implementation is a “herculean” effort.

Overcoming these concerns:

- ✓ Budget Constraints
- ✓ Capacity for Change
- ✓ Implementation Momentum



Don't tell your management why they need to reward your project – they should tell you what they need.



Busted – Not all PLM
Implementations are created equal



Adopt an approach that leverages
out-of-the box solutions.

An aerial photograph of a shipyard is shown with a semi-transparent digital grid and glowing blue lines overlaid. These lines connect various points across the shipyard, including a large ship under construction, several industrial buildings, and storage areas. A small, stylized icon of a document or checklist is visible in the lower-left corner of the grid. The text "Holistic View Across the Shipyard" is centered over the image in a large, dark blue font.

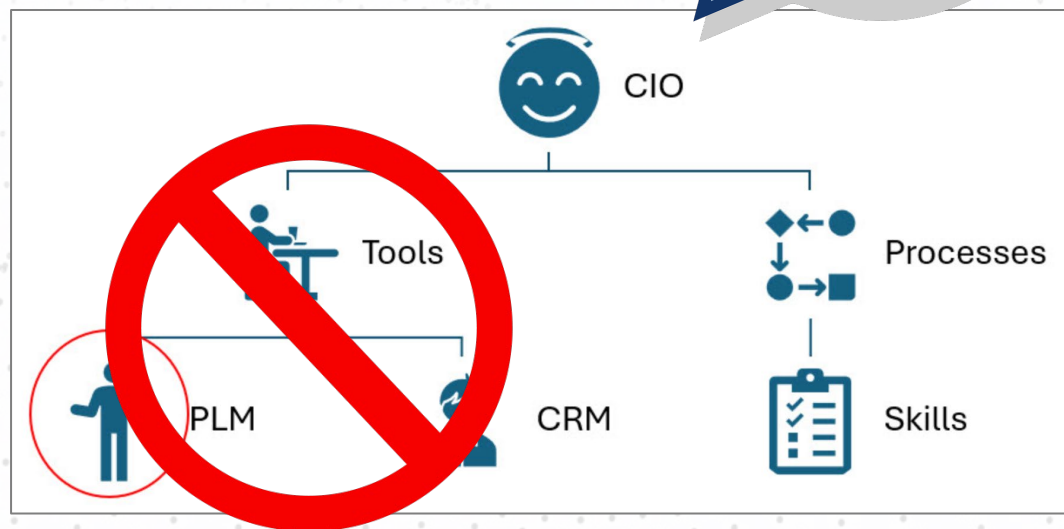
Holistic View Across the Shipyard

A photograph of two men in business suits shaking hands, with the text 'Understanding Decision-Makers' overlaid in a large, dark blue font.

Understanding Decision-Makers



Align your case with the strategic goals of the company



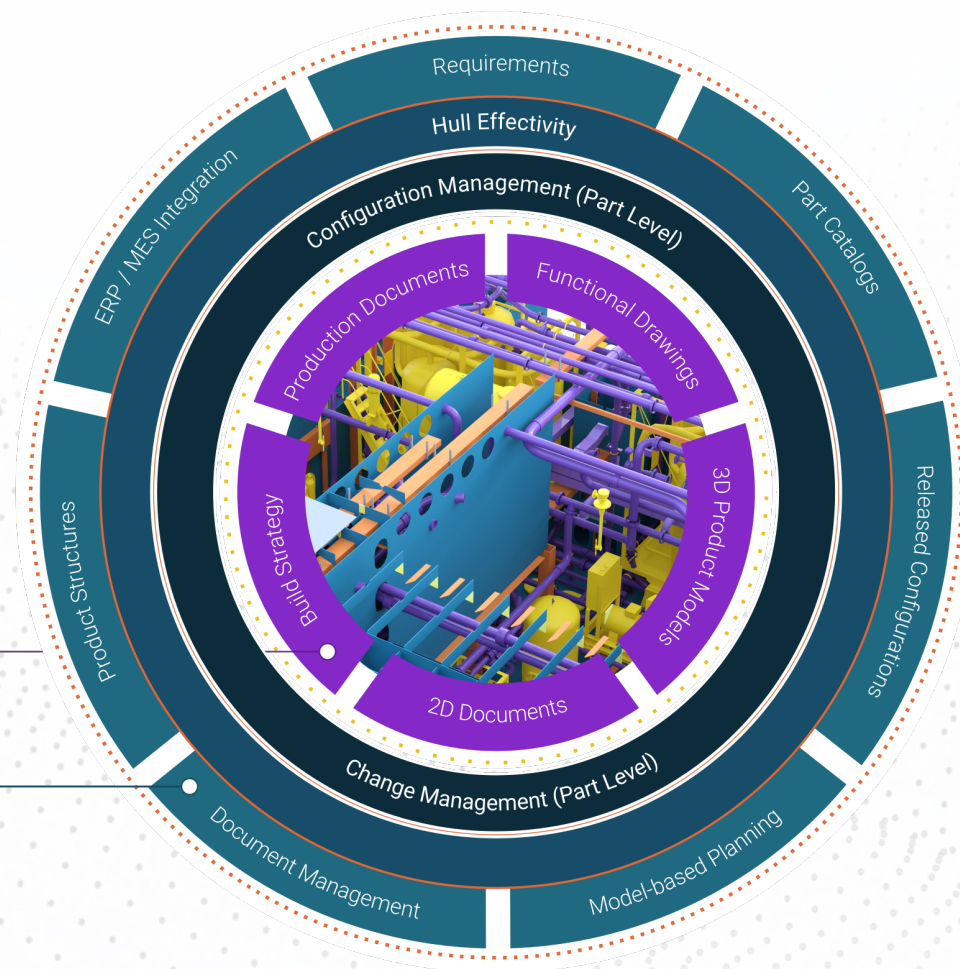
PLM is a business
need, not an IT
service



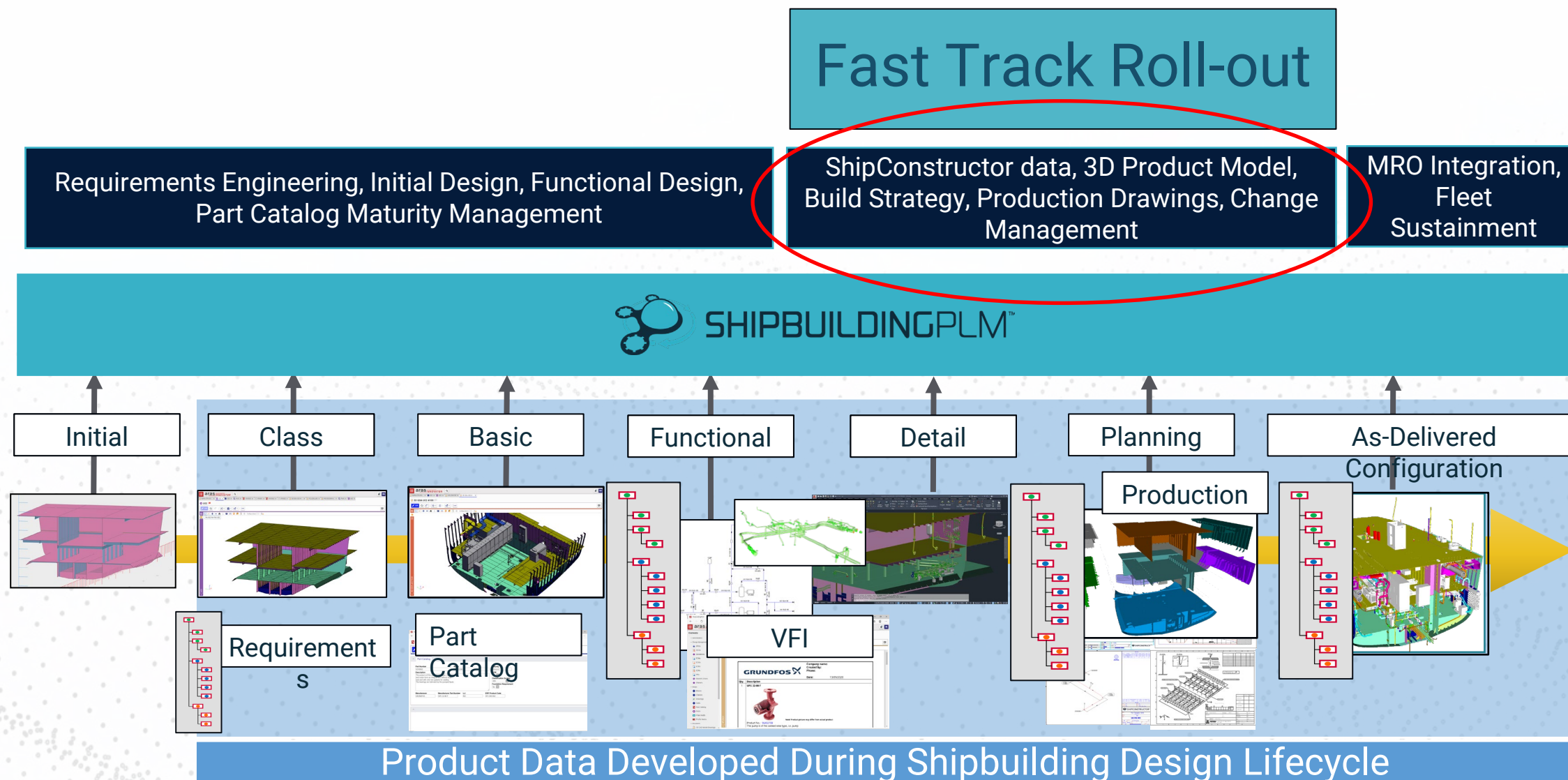
Myth – Implementing CAD & PLM is costly, complex, and disruptive

CAD and PLM are Not 4-Letter Words

*The world's first fully
integrated,
shipbuilding-specific,
CAD and PLM solution*



CAD and PLM are Not 4-Letter Words



Accelerated SPLM Implementation Strategy

ShipbuildingPLM

3D Product Model, Build Strategy, Production Deliverables Change Management

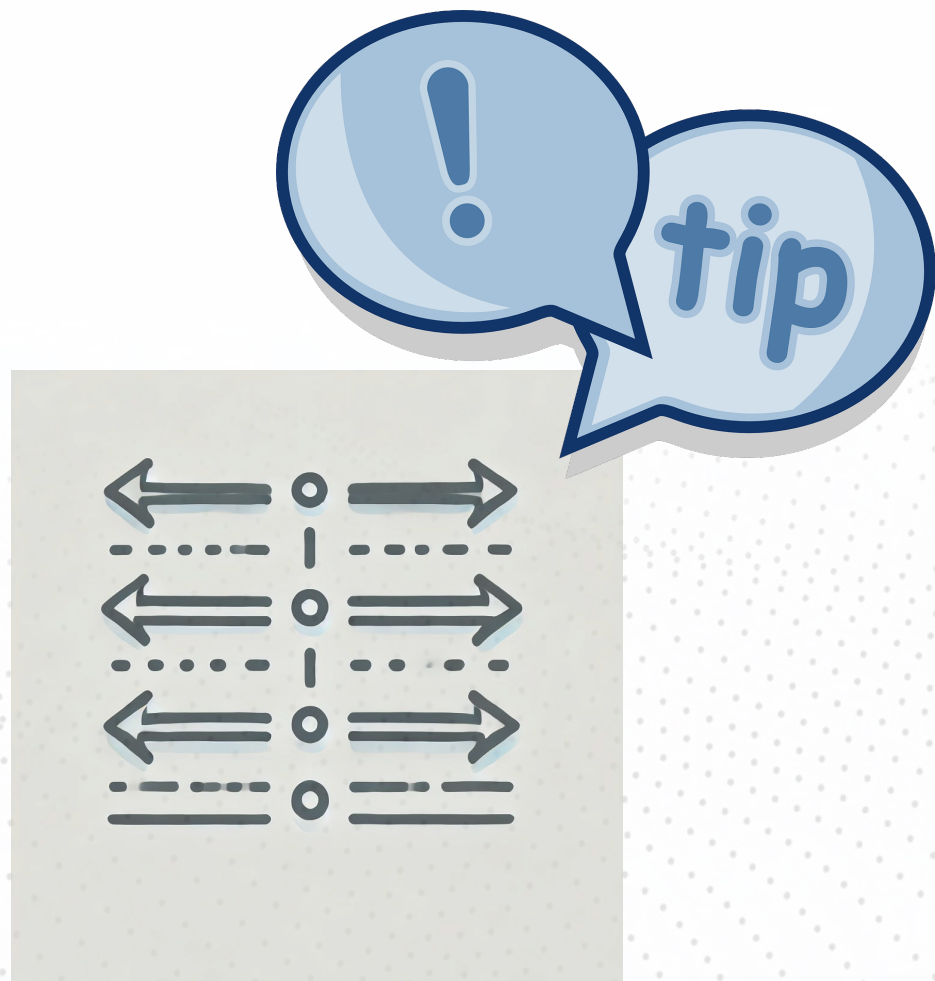
Key Goals and Deliverables

- ShipbuildingPLM Quick Ramp-up
- **Estimated 4-month project delivery**
- ShipConstructor Data (3D Model, EBOM/PBOM, Production Deliverables) in ShipbuildingPLM
- Collaborative multi-site access to WIP Detail Design for Engineering Teams
- Improved visibility of ShipConstructor project changes.
- Shipyard “self-service” retrieval/access to approved Production Design data.
- Project Reports and Real-Time program oversight
- Configuration Controlled Digital Ship



Overcoming these concerns:

- ✓ Budget Constraints: Long-term view
- ✓ Capacity for Change: Sliced/Phased approach
- ✓ Implementation Momentum: Quick wins/ROI



Your company
should decide on
the direction



Improved Efficiency

Reduced Costs

Enhanced Project Outcomes

Additional Resources

Looking at Investing in PLM?

This blog post, originally published in 2015, was written to address the various aspects of PLM implementation that our CEO frequently gets asked about. Nearly a decade later, those insights remain just as relevant and valuable.

<https://www.ssi-corporate.com/blog-waveform/looking-at-investing-in-plm/>

Maximize your ROI with this free 2-minute assessment.

This assessment explores how your shipyard can avoid unnecessary costs, reduce rework, increase scalability, improve efficiency, and accelerate design and production velocity. Crafted by shipbuilding and industry experts, the results will guide your team to project success.

<https://www.ssi-corporate.com/plm-roi-assessment/>

PLM ROI Assessment

Louisiana Apt - Garden Patio, N

PLM ROI Assessment » SSI

ssi-corporate.com/plm-roi-assessment/

Apps

D365 Sales Hub

(18) Feed | LinkedIn

SSI DigitalHub / Shi...

Home

SSI Knowledge Pora...

SSI Target Selection...

Home - Starter Portal

Dashboard - SSI Co...

>>

All Bookmarks

SSI®

Software, services, and expertise

for the business of shipbuilding.

Challenges

Solutions

SSI Learning

Products

Resources

About Us

Maximize your ROI with this free 2-minute assessment

This assessment explores how your shipyard can avoid unnecessary costs, reduce rework, increase scalability, improve efficiency, and accelerate design and production velocity. Crafted by shipbuilding and industry experts, the results will guide your team to project success.

Share

Post

Share

Share

Please note that your information is saved on our server as you enter it.

Step 1 of 9

11%

Scenario 1: Handling Design Changes *

Your team receives a significant design change request mid-project. How do your current systems handle this?

☐ Automatically updates all relevant documents and notifies stakeholders.


☐ Requires some manual intervention but generally handles changes well.

☐ Struggles with efficient updates, causing delays.

☐ Cannot handle changes effectively, leading to major disruptions.

☐ I'm not sure

24



SSI World Shipbuilding Conference 2024



- ✓ Why will this be relevant for our business?
- ✓ What will our business need in the next 5-10 years?
- ✓ How are we going to adapt our business?





Questions?

Thank you!